



HP Ergosoft RIP Color Edition

Print PANTONE Emulation Swatchbook

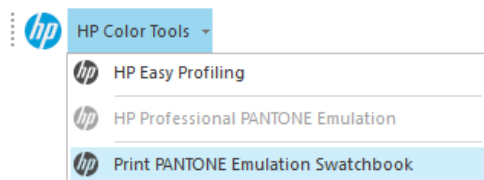


Print PANTONE Emulation Swatchbook

HP Ergosoft RIP Color Edition allows users to easily print color samples of their Pantone Swatchbooks to check color accuracy of the profile on a given medium, ensuring that all colors appear exactly as they should.

To access the Print Pantone Swatchbook feature, it is important to select a Print Environment with an embedded Profile. If you do not have one already, you can easily set one up either by using the HP Easy Profiling tool or import one from HP's extensive library through the HP Stitch Colorbase.

Accessing the Feature



Once a Print Environment with profile is in place and selected, access the *HP Tools Bar* and select *Print PANTONE Emulation Swatchbook*.

The opening dialog allows you to configure which Pantone colorbook should be printed and the arrangement of the color strips.

Selecting the Swatchbook

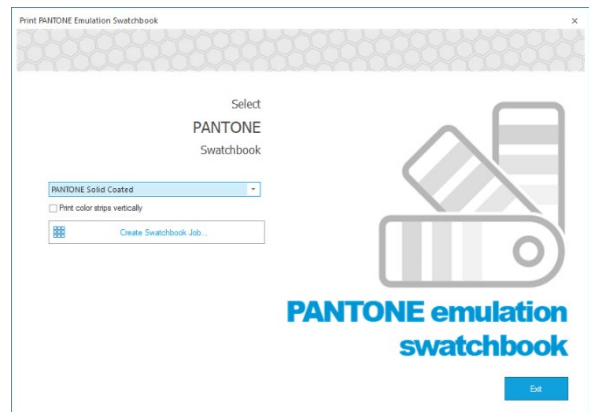
From the Dropdown-Menu, select the appropriate Swatchbook that best matches your application.

Pantone Solid Coated: Color Library of reference color patches suitable for coated (Glossy) materials.

Pantone Solid Uncoated: Color Library of reference color patches suitable for uncoated (Matte) materials.

Pantone Pastels & Neons Coated: Color Library of pastel and neon color patches suitable for uncoated (Matte) materials.

Pantone Metallics Coated: Color Library of metallic color patches suitable for uncoated (Matte) materials.



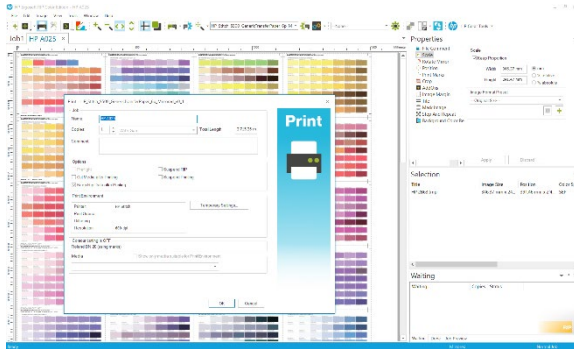
By checking the *Print Color strips vertically* box below the colorbook selection, the individual color patches are rearranged to vertical direction.



Generating and Printing the Swatchbook Job

When satisfied with the settings, click *Create Swatchbook Job*. The Ergosoft RIP will then calculate the color values of each Swatchbook color through the profile and create a job with color adjusted charts.

Once the chart has been created, exit the *Print PANTONE Emulation Swatchbook* tool using the *Exit* button.



Before printing, you have the opportunity to edit the print job to suit your application using Ergosoft RIP's selection of job editing tools such as rotating, mirroring, positioning, cropping, etc.

Once you are ready to print, click the *Print* button in the Toolbar and confirm the *Print* dialog with *Ok* to send your Pantone Emulation Swatchbook job to the printer.